

# CitectSCADA V6.1

## What's New

CitectSCADA is a fully integrated HMI/SCADA solution that enables customers to increase return on assets by delivering a highly scalable, reliable control and monitoring system. Easy-to-use configuration tools and powerful features enable you to quickly develop and deploy solutions for any size application. CitectSCADA V6.1 has a number of exciting new and enhanced features including: multi-CPU support, integrated XML web service, easier configuration and enriched visualization.

### SUPERIOR PERFORMANCE

CitectSCADA V6.1 delivers superior performance by enabling you to utilize the power of multi-CPU or hyper-threaded machines. At startup, CitectSCADA is automatically able to create separate components across multiple CPUs, resulting in improved performance and stability.

The inherent scalability of CitectSCADA can now, in V6.1, be utilized across the CPUs in a single PC, reducing hardware costs for medium to large systems.

The CitectSCADA Runtime Manager provides visibility and control over each component process, allowing each process to be restarted individually. Further, if any of the components stop for whatever reason, it will automatically restart.

### INTEGRATED XML WEB SERVICE

With the industry's acceptance of XML web services as an interface between business applications, a read-only web service interface is integrated into CitectSCADA V6.1. This interface provides access to all tags, alarms and trend information and will help integrate CitectSCADA with web systems.

### WHAT'S NEW IN V6.1?

- Multi-CPU Support
- Read-only XML Web Service
- Multi-project Find and Replace
- Computer Setup Editor
- Windows XP-Style buttons
- Rounded rectangles
- Gradient fills
- DatabaseExchange
- OPC Server V2
- Read-only projects
- Kernel Cicode window security
- Improved Help
- Spanish language available

### FREE LICENSE

A single read-only CitectSCADA Pocket license with every Full Server purchased.

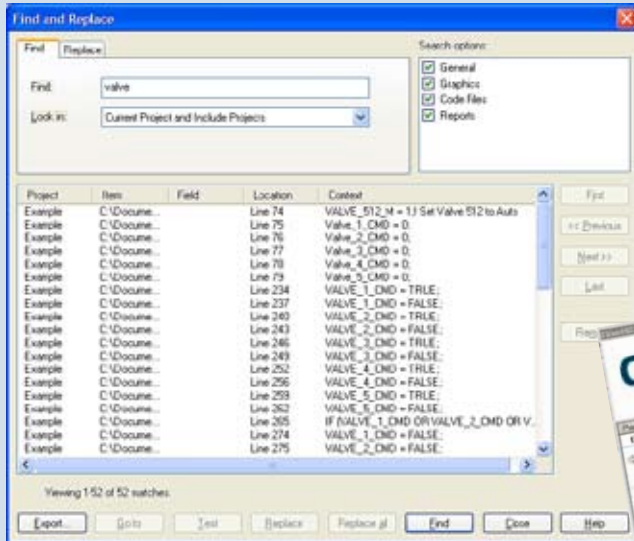


### INVESTING FOR YOUR FUTURE

Citect is committed to investing in the future of your CitectSCADA system.

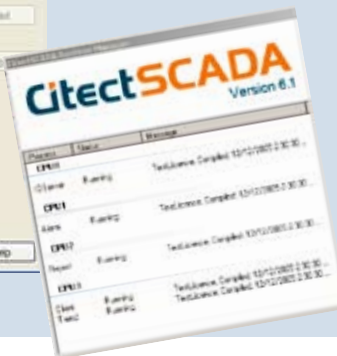
Citect Gold Support gives you access to the latest CitectSCADA releases and expertise.

To upgrade to CitectSCADA V6.1, sign up for Citect Gold Support today!



LEFT: The enhanced Find and Replace function provides a powerful search capability across multiple projects.

BELOW: Multi-CPU's are supported resulting in superior system performance and stability.



# Scalable >>> Flexible >>> Reliable

## CITECTSCADA OPTIONS

### CitectSCADA Reports and Historians

A powerful reporting and analysis tool that seamlessly collects, historizes and reports data from multiple SCADA systems. Users can utilize the integrated database containing trend, alarm and event data to get a complete understanding of plant operations.

### CitectSCADA Batch

Delivers a highly flexible, scalable, S88 based batch management solution to increase productivity and achieve consistent high quality. Providing unrivalled reliability, this easy-to-use offering integrates tightly with existing systems and facilitates compliance with FDA 21 CFR Part 11.

### CitectSCADA Pocket

Provides an operator interface for the remote monitoring and control of your plant anytime, anywhere. Tightly integrated with CitectSCADA, this easy-to-use offering enables operators to change set-points and outputs as well as acknowledging alarms.

### CitectSCADA FastLink

Unifying CitectSCADA and PLC tag configuration into a single common database reduces implementation time, system maintenance costs and eliminates configuration errors.

### CitectSCADA Time Scheduler

An integrated tool which automatically controls equipment based on calendar events.

For example, you can use this new XML web service to incorporate manufacturing data directly into your corporate intranet.

The new XML interface is used with the read-only CitectSCADA Pocket license that is free with new purchases of a CitectSCADA V6.1 server. Additional read-only CitectSCADA Pocket licenses are available.

## CONFIGURATION MADE EASY

One of the key features of V6.1 is the ease of configuration, saving time on large, complex projects. The Find and Replace functions have been enhanced to search graphics pages, genies and super-genies within the project. The Find can search throughout the included project structure, providing the user with a single search engine for any tag, function or string within a CitectSCADA system. The Goto feature takes you to the location where the tag is used.

Results of the Find are able to be exported to text files allowing you to cross-reference where the selected tag is used. A new report is available identifying Unused Tags, allowing you to minimize any unnecessary complexity in your CitectSCADA project.

The Computer Setup Editor is a new utility designed to help you configure each PC in your CitectSCADA network more easily. The context-sensitive Help provides the parameter information you need to optimally configure your CitectSCADA PC, while its Compare functionality rapidly identifies changes that have been made to the Computer Setup.

## ENRICHED VISUALIZATION

The visualization tools have been enriched to enable the production of high quality operator interfaces. Enhancements include:

- Windows XP-style buttons
- Dynamic movement properties on buttons
- Rounded rectangles
- Gradient fills for vector objects (ellipses, rectangles, and polygons)

The DatabaseExchange, an evolution of the CiRecipe control, allows you to view data from any ODBC compatible data source. The query controlling the data displayed is able to be changed at runtime, allowing you to view different data based on process conditions. You are also able to link columns within the displayed data to CitectSCADA tags for exchanging data with the control system. For example, you can download a simple recipe to CitectSCADA tags for control or upload new parameters for analysis.

## SUPPORT FOR STANDARDS

CitectSCADA V6.1 incorporates OPC Server DA2.0, that allows any OPC client application (1.0a or 2.0) to access all data exposed by CitectSCADA Runtime through the OPC interface.

Responding to the needs of our customers, with V6.1 you now have the option of using Apache Tomcat as the platform for WebServer in addition to Microsoft IIS.

## ENHANCED SECURITY

The security of CitectSCADA configuration has been enhanced in V6.1 to have the ability to place Read-Only settings on any or all projects within a CitectSCADA system. Read-Only settings are based on your Windows users or groups, restricting modifications to the control system. OEMs and CIPs can lock their projects on a site while still integrating the project within the main control system.

Runtime security has also been enhanced, with password access being applied to the Cicode window within the kernel. The kernel is a great tool for diagnosing CitectSCADA systems. By securing the Cicode window, more systems will be able to benefit from access to the kernel.

## IMPROVED HELP

The CitectSCADA online Help has been enhanced to provide easier access to the information you need. Some of these enhancements include easier access to driver Help and the use of "breadcrumbs" to facilitate navigation.

Learn more about how CitectSCADA can benefit your business at [www.citect.com](http://www.citect.com)

OCEANIA +61 2 9496 7300, NORTH AMERICA +1 770 521 7511, LATIN AMERICA +1 770 521 7511, AFRICA +27 11 699 6600, EUROPE +31 71 576 1550, MIDDLE EAST +31 71 576 1550, GREATER CHINA +86 21 6886 3799, NORTH ASIA +65 6866 3712, SOUTH EAST ASIA +65 6866 3712, INDIA +65 6866 3712  
© 2006 Citect Corporation Ltd. All rights reserved. All trademarks, brands or names are property of their respective holders. PR 10495

**Citect**  
Real-time Intelligence